

# AVerVision CP300 *Portable Document Camera*

## Versatile yet slick design

- **3.2M high-quality image sensor and up to 24fps**
- **16X total zoom with WXGA (1280x720) output**
- **Quick Auto Focus**
- **Innovative shuttle wheel with clear LED indicator**
- **Rich feature sets: PIP, Split Screen, AVerPresenter, Networking, Annotation and Recording**



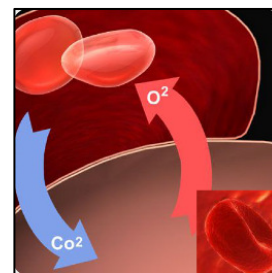
## Product Specifications & Features

| <b>Image / Video</b>                              |  |
|---|--|
| Image Sensor                                      | 1/2" CMOS  |
| Total Pixels                                      | 3.2M Pixels  |
| Output Resolution                                 | WXGA (1280 x 720)  |
| Lens  | f1 = 9.6mm   |
| Zoom  | 16X Total Zoom<br>(2X AVERZOOM™ + 8X Digital Zoom)                   |
| Frame Rate  | 24fps (Max.)   |
| Focus   | Auto/ Manual   |
| Shooting Area                                     | A4 Landscape   |
| <b>Functions</b>                                  |  |
| Image Rotation                                    | Camera Head 0°/ 90°/90°  |
| Image Storage                                     | Built-in Memory (Max: 80)  |
| On-Screen Display (OSD)                           | Provided   |
| Image Effect                                      | Color/ B/W/ Negative/ Mirror/ Reverse/ Freeze                        |
| Image Adjust. (White Balance/Exposure/Night View) | Auto/ Manual   |
| AVerPresenter                                     | Provided (AVerVisor and AVerBox)                                     |
| Split Screen                                      | Provided (Horizontal)  |
| Picture-in-Picture                                | Provided   |
| Display Mode                                      | Text/ Graphics/ High Frame   |
| Capture Mode                                      | Single/Continuous  |
| Profile   | Provided   |
| Timer   | Provided   |
| Flicker Filter Control                            | 2 Levels   |
| Remote Control                                    | Provided (With Laser Pointer)  |
| <b>Connectivity</b>                               |  |
| DVI-I Output                                      | Provided   |
| VGA Input/Output                                  | Provided (15-Pins D-sub, Pass Through)                               |
| S-Video, Composite Video Output                   | Provided (NTSC or PAL)   |
| RS-232 Port                                       | Provided (With S-Video/RS-232 Adapter Cable)                         |
| USB 2.0 Port                                      | Provided (PC Camera/ Built-in Image Download)                        |
| <b>Lighting</b>                                   |  |
| Light Source                                      | Embedded LED Lamp  |
| Laser Positioning Guide                           | Provided   |
| <b>Others</b>                                     |  |
| Dimension   | Operating: 160mm x 170mm x 450mm<br>Folded: 287.4mm x 232.5mm x 61mm |
| Net Weight  | 2.4kg (5.31lbs)  |
| Power Source                                      | AC/DC 100-240V ~ 4A, 50-60 Hz  |
| Warranty  | 3 Year Limited Parts and Labor *1                                    |
| Certifications                                    | FCC, CE  |
| <b>Software System Requirement</b>                |  |
| Windows®  | 2000 (SP4), XP (SP2), Vista (32-bit or 64-bit)                       |
| Macintosh®  | OS 10.3 (Panther), OS 10.4 (Tiger), OS 10.5 (Leopard)                |

**Quick Auto Focus sharpens image quality**



**Versatile Added on!**



**>> Picture-in-Picture**

**Split Screen >>**



**AVerVision Software**

AVerMedia's new AVerVision software offers brand new UI with the ability to do networking, add annotations to document camera content, and capture still images, record video clips with audio in multiple formats.

**Minimum System Requirement**

**For PC**

- Intel® Pentium® IV or AMD Athlon® XP or higher processor
- 3 GHz Pentium IV or Intel core 2 duo or better (recommended)
- Windows 2000 Professional (SP4), Windows XP Professional (SP2) or Home, Vista (32-bit or 64-bit)

**For MAC**

- 1 GHz G4 processor or 1.83 GHz Intel core 2 duo or better
- Mac OS 10.3.(Panther), or 10.4.(Tiger), or 10.5 (Leopard)

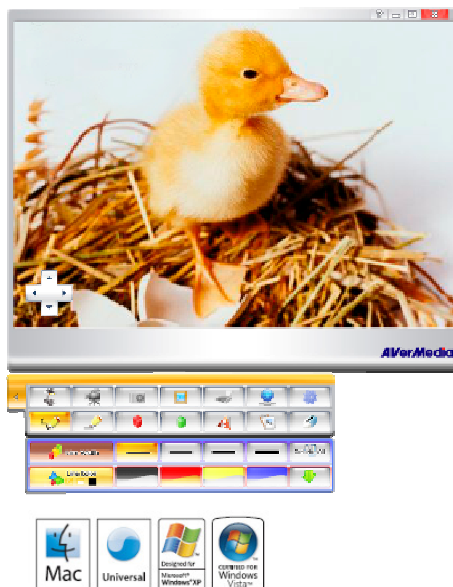
**Memory:** 512 MB (1GB recommended for Vista and Leopard)

**Hard Disk:** 60MB of available hard-disk space

**LAN connection for Networking function:** RJ-45 100T, or 802.11b WLAN (802.11g recommended)

**AVerVision Features**

- Image Enhance Mode
- Networking
- Annotation
- Video and Audio recording
- Still image capture (Single/Continuous)
- Support TWAIN
- Control Document Cameras features from control panel
- Printer



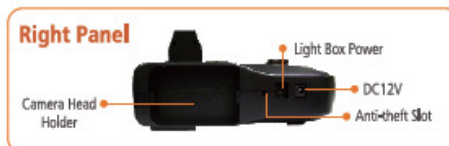
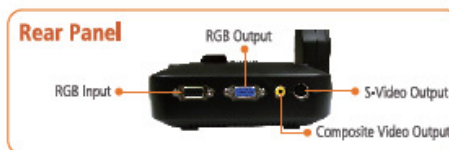
**Package Content**

**Standard**

- AVerVision CP300
- Power Adapter & Cord
- S-Video/ RS-232 Adapter Cable
- VGA Cable
- S-Video Cable
- USB Cable
- RCA Cable
- Remote Control with Batteries
- User Manual
- AVerVision Software CD
- Warranty Card
- Carrying Bag
- Anti-Glare Sheet

**Optional Accessory**

- Microscope Adapter
- Light Box



\*1 Please refer to user manual

\*2 Features subject to change without notice

Global Home Page: [www.avermedia.com](http://www.avermedia.com), [www.avervision.com](http://www.avervision.com)

International / Taiwan: (Tel) 886-2-2226-3630 (Fax) 886-2-2226-8751

USA: (Tel) 1-408-263-3828 (Fax) 1-408-263-8132

U.K.: (Tel) 44-870-224-7116 (Fax) 44-44-870-224-7124

Germany: (Tel) 49 (6074) 40740-0 (Fax) 49 (6074)40740-37

France: (Tel) 01 60 05 75 16 (Fax) 01 60 05 78 42

Spain: (Tel) 34-91-804- 6035 (Fax) 34-91-803-7629

Thailand: (Tel) 66-2-9429262 (Fax) 66-2-9429266

China: (Tel) 86-21-52987988 (Fax) 86-21-52987970